

PE/Cyanine7 anti-human CD25 Antibody

Catalog# / Size	302611 / 25 tests 302612 / 100 tests
Clone	BC96
Regulatory Status	RUO
Workshop	V T-072
Other Names	Low affinity IL-2R, IL-2R α chain, Tac, p55
Isotype	Mouse IgG1, κ
Description	CD25 is a 55 kD type I transmembrane glycoprotein also known as the low affinity IL-2 receptor α chain or Tac. It is expressed on progenitor lymphocytes, activated T and B cells, and activated monocytes/macrophages. CD25 is also expressed on a subset of non-stimulated CD4 ⁺ T cells termed T regulatory cells. CD25 associates with the IL-2 receptor β (CD122) and common γ chains (CD132) to form the high affinity IL-2R complex.

Product Details

Verified Reactivity	Human
Reported Reactivity	Baboon, Chimpanzee, Cynomolgus, Pigtailed Macaque, Rhesus
Antibody Type	Monoclonal
Host Species	Mouse
Formulation	Phosphate-buffered solution, pH 7.2, containing 0.09% sodium azide and BSA (origin USA)
Preparation	The antibody was purified by affinity chromatography, and conjugated with PE/Cyanine7 under optimal conditions.
Concentration	Lot-specific (to obtain lot-specific concentration, please enter the lot number in our Concentration and Expiration Lookup or Certificate of Analysis online tools.)
Storage & Handling	The antibody solution should be stored undiluted between 2°C and 8°C, and protected from prolonged exposure to light. Do not freeze.
Application	FC - Quality tested
Recommended Usage	Each lot of this antibody is quality control tested by immunofluorescent staining with flow cytometric analysis . For flow cytometric staining, the suggested use of this reagent is 5 μ l per million cells in 100 μ l staining volume or 5 μ l per 100 μ l of whole blood.
Excitation Laser	Blue Laser (488 nm) Green Laser (532 nm)/Yellow-Green Laser (561 nm)
Application Notes	Additional reported applications include: immunocytochemistry ³ .
Additional Product Notes	BioLegend is in the process of converting the name PE/Cy7 to PE/Cyanine7. The dye molecule remains the same, so you should expect the same quality and performance from our PE/Cyanine7 products. Please contact Technical Service if you have any questions.
Application References	<ol style="list-style-type: none"> Schlossman S, <i>et al.</i> Eds. 1995. Leucocyte Typing V. Oxford University Press. New York. Kmieciak M, <i>et al.</i> 2009. <i>J. Transl. Med.</i> 7:89. (FC) PubMed Ernst CW, <i>et al.</i> 2007. <i>Clin. Exp. Immunol.</i> 148:271. (ICC) PubMed
Product Citations	<ol style="list-style-type: none"> Couturier J, <i>et al.</i> 2016. <i>Retrovirology.</i> 13:30. PubMed Rendeiro AF, <i>et al.</i> 2020. <i>Nat Commun.</i> 11:577. PubMed Kagoya Y, <i>et al.</i> 2018. <i>Nat Commun.</i> 9:1915. PubMed Barry KC, <i>et al.</i> 2018. <i>Nat Med.</i> 24:1178. PubMed Schmidleithner L <i>et al.</i> 2019. <i>Immunity.</i> 50(5):1232-1248 . PubMed

6. Massafra V, *et al.* 2021. *J Immunol.* 207:493. [PubMed](#)
7. Glaubitz J, *et al.* 2022. *Nat Commun.* 13:4502. [PubMed](#)
8. Palamides P, *et al.* 2016. *Dis Model Mech.* 9: 985 - 997. [PubMed](#)
9. Kim ST, *et al.* 2022. *Nat Commun.* 13:1970. [PubMed](#)
10. Wu W, *et al.* 2020. *Oncol Lett.* 0.91875. [PubMed](#)
11. Huang B, *et al.* 2020. *Cell.* 179(5):1160-1176.e24.. [PubMed](#)
12. Gorczynski RM, *et al.* 2017. *Immunology.* 150:418. [PubMed](#)
13. Zirngibl F, *et al.* 2021. *J Immunother Cancer.* 9:. [PubMed](#)
14. Acharya A, *et al.* 2020. *J Virol.* 95:e01657. [PubMed](#)
15. Obradovic A, *et al.* 2021. *Cell.* 184(11):2988-3005.e16. [PubMed](#)
16. Evans RDR, *et al.* 2020. *Nat Commun.* 3.491666667. [PubMed](#)
17. Levring TB, *et al.* 2019. *Sci Rep.* 9:16725. [PubMed](#)
18. Sayin I, *et al.* 2018. *J Exp Med.* 7:40286. [PubMed](#)
19. Overacre-Delgoffe AE, *et al.* 2017. *Cell.* 169:1130. [PubMed](#)
20. Xu X, *et al.* 2020. *Arthritis Rheumatol.* 72:1303. [PubMed](#)
21. NULL, *et al.* 2022. *Cell.* 185:916. [PubMed](#)
22. Weinberg A, *et al.* 2015. *PLoS One.* 10:122431. [PubMed](#)
23. Mackroth M, *et al.* 2016. *PLoS Pathog.* 12:e1005909. [PubMed](#)
24. Groen B, *et al.* 2015. *Sci Rep.* 5: 13618. [PubMed](#)
25. Gonzalez-Figueroa P, *et al.* 2021. *Cell.* 184(7):1775-1789.e19. [PubMed](#)

RRID AB_314281 (BioLegend Cat. No. 302611)
 AB_314282 (BioLegend Cat. No. 302612)

Antigen Details

Structure	Type I transmembrane glycoprotein, 55 kD
Distribution	Activated T cells and B cells, monocytes/macrophages, Treg
Function	Associates with IL-2 receptor β (CD122) and γ chains (CD132) to form high affinity IL-2R complex
Ligand/Receptor	IL-2
Cell Type	B cells, Macrophages, Monocytes, T cells, Tregs
Biology Area	Cell Biology, Immunology, Neuroscience, Neuroscience Cell Markers
Molecular Family	CD Molecules, Cytokine/Chemokine Receptors
Antigen References	1. Taniguchi T, <i>et al.</i> 1993. <i>Cell</i> 73:5. 2. Waldmann T. 1991. <i>J. Biol. Chem.</i> 266:2681.
Gene ID	3559

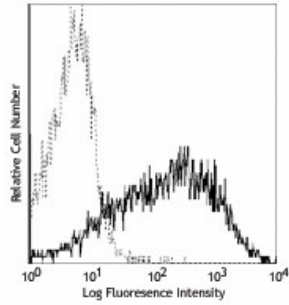
Related Protocols

[Cell Surface Flow Cytometry Staining Protocol](#)

Other Formats

APC anti-human CD25, FITC anti-human CD25, PE anti-human CD25, PE/Cyanine5 anti-human CD25, Purified anti-human CD25, APC/Cyanine7 anti-human CD25, PE/Cyanine7 anti-human CD25, Alexa Fluor® 488 anti-human CD25, Alexa Fluor® 647 anti-human CD25, Pacific Blue™ anti-human CD25, Alexa Fluor® 700 anti-human CD25, Biotin anti-human CD25, PerCP/Cyanine5.5 anti-human CD25, Brilliant Violet 421™ anti-human CD25, Brilliant Violet 605™ anti-human CD25, Brilliant Violet 650™ anti-human CD25, Brilliant Violet 711™ anti-human CD25, Brilliant Violet 785™ anti-human CD25, Brilliant Violet 510™ anti-human CD25, APC/Fire™ 750 anti-human CD25, TotalSeq™-A0085 anti-human CD25, PE/Dazzle™ 594 anti-human CD25, TotalSeq™-B0085 anti-human CD25, TotalSeq™-C0085 anti-human CD25, TotalSeq™-D0085 anti-human CD25

Product Data



PHA-stimulated (3 day) human peripheral blood lymphocytes were stained with CD25 (clone BC96) PE/Cyanine7 (solid line) or mouse IgG1, κ PE/Cyanine7 isotype control (dotted line).

For research use only. Not for diagnostic use. Not for resale. BioLegend will not be held responsible for patent infringement or other violations that may occur with the use of our products.

*These products may be covered by one or more Limited Use Label Licenses (see the BioLegend Catalog or our website, www.biolegend.com/ordering#license). BioLegend products may not be transferred to third parties, resold, modified for resale, or used to manufacture commercial products, reverse engineer functionally similar materials, or to provide a service to third parties without written approval of BioLegend. By use of these products you accept the terms and conditions of all applicable Limited Use Label Licenses. Unless otherwise indicated, these products are for research use only and are not intended for human or animal diagnostic, therapeutic or commercial use.

BioLegend Inc., 8999 BioLegend Way, San Diego, CA 92121 www.biolegend.com
Toll-Free Phone: 1-877-Bio-Legend (246-5343) Phone: (858) 768-5800 Fax: (877) 455-9587