

## Alexa Fluor<sup>®</sup> 700 anti-human TCR V $\delta$ 2 Antibody

<b>Catalog# / Size</b>	331415 / 25 tests 331416 / 100 tests
<b>Clone</b>	B6
<b>Regulatory Status</b>	RUO
<b>Other Names</b>	T cell receptor V $\delta$ 2
<b>Isotype</b>	Mouse IgG1, $\kappa$
<b>Description</b>	The V $\delta$ 2 TCR is a variant of the TCR $\delta$ chain expressed on a subset of $\gamma/\delta$ T cells. V $\gamma$ 9V $\delta$ 2 T lymphocytes, a major $\gamma/\delta$ T cell subset in humans, recognize phosphoantigens, certain tumor cells, and cells treated with aminobisphosphonates. This cell population displays cytolytic activity against various tumor cells. The $\gamma/\delta$ TCR is an heterodimeric TCR complex composed of covalently bound $\gamma$ and $\delta$ chains involved in antigen recognition and the non-covalently associated monomorphic proteins CD3 $\delta$ , $\gamma$ , $\epsilon$ , and $\zeta$ chains.

### Product Details

---

<b>Verified Reactivity</b>	Human
<b>Reported Reactivity</b>	Chimpanzee, Rhesus
<b>Antibody Type</b>	Monoclonal
<b>Host Species</b>	Mouse
<b>Formulation</b>	Phosphate-buffered solution, pH 7.2, containing 0.09% sodium azide and BSA (origin USA)
<b>Preparation</b>	The antibody was purified by affinity chromatography and conjugated with Alexa Fluor <sup>®</sup> 700 under optimal conditions.
<b>Concentration</b>	Lot-specific (to obtain lot-specific concentration, please enter the lot number in our <a href="#">Concentration and Expiration Lookup</a> or <a href="#">Certificate of Analysis</a> online tools.)
<b>Storage &amp; Handling</b>	The antibody solution should be stored undiluted between 2°C and 8°C, and protected from prolonged exposure to light. <b>Do not freeze.</b>
<b>Application</b>	<a href="#">FC - Quality tested</a>
<b>Recommended Usage</b>	<p>Each lot of this antibody is quality control tested by <a href="#">immunofluorescent staining with flow cytometric analysis</a>. For flow cytometric staining, the suggested use of this reagent is 5 <math>\mu</math>l per million cells or 5 <math>\mu</math>l per 100 <math>\mu</math>l of whole blood. It is recommended that the reagent be titrated for optimal performance for each application.</p> <p>* Alexa Fluor<sup>®</sup> 700 has a maximum emission of 719 nm when it is excited at 633 nm / 635 nm. Prior to using Alexa Fluor<sup>®</sup> 700 conjugate for flow cytometric analysis, please verify your flow cytometer's capability of exciting and detecting the fluorochrome.</p> <p>Alexa Fluor<sup>®</sup> and Pacific Blue™ are trademarks of Life Technologies Corporation.</p> <p><a href="#">View full statement regarding label licenses</a></p>
<b>Excitation Laser</b>	Red Laser (633 nm)
<b>Application References</b>	<ol style="list-style-type: none"><li>1. Rojas RE, <i>et al.</i> 2005. <i>J. Infect. Dis.</i> 192:1806.</li><li>2. Correia DV, <i>et al.</i> 2011. <i>Blood</i> 118:992. (FC) <a href="#">PubMed</a></li></ol>
<b>RRID</b>	AB_2687084 (BioLegend Cat. No. 331415) AB_2687085 (BioLegend Cat. No. 331416)

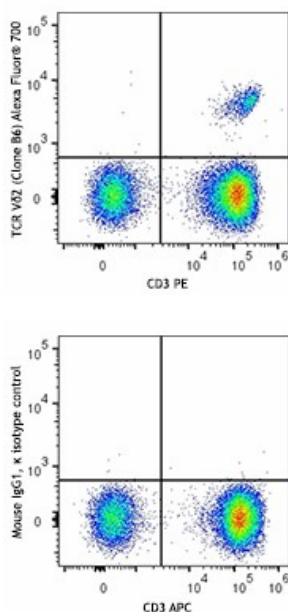
## Antigen Details

<b>Structure</b>	Ig superfamily member, TCR $\gamma/\delta$ with CD3 forms the CD3/TCR complex
<b>Distribution</b>	Expressed on majority of peripheral $\gamma/\delta$ T cells
<b>Function</b>	Antigen recognition, T cell activation
<b>Ligand/Receptor</b>	Peptide bound to MHC
<b>Cell Type</b>	T cells
<b>Biology Area</b>	Adaptive Immunity, Immunology
<b>Molecular Family</b>	TCRs
<b>Antigen References</b>	1. Scotet E, <i>et al.</i> 2005. <i>Immunity</i> 22:71. 2. Rincon-Orozco B, <i>et al.</i> 2005. <i>J. Immunol.</i> 175:2144.
<b>Gene ID</b>	<a href="#">6964</a>

## Other Formats

Purified anti-human TCR V $\delta$ 2, Biotin anti-human TCR V $\delta$ 2, FITC anti-human TCR V $\delta$ 2, PE anti-human TCR V $\delta$ 2, PerCP anti-human TCR V $\delta$ 2, Brilliant Violet 711™ anti-human TCR V $\delta$ 2, Pacific Blue™ anti-human TCR V $\delta$ 2, Alexa Fluor® 700 anti-human TCR V $\delta$ 2, PerCP/Cyanine5.5 anti-human TCR V $\delta$ 2, APC anti-human TCR V $\delta$ 2, PE/Cyanine7 anti-human TCR V $\delta$ 2, APC/Fire™ 750 anti-human TCR V $\delta$ 2, Brilliant Violet 421™ anti-human TCR V $\delta$ 2, Brilliant Violet 605™ anti-human TCR V $\delta$ 2, PE/Dazzle™ 594 anti-human TCR V $\delta$ 2, Brilliant Violet 510™ anti-human TCR V $\delta$ 2, TotalSeq™-A0582 anti-human TCR V $\delta$ 2, TotalSeq™-C0582 anti-human TCR V $\delta$ 2, TotalSeq™-B0582 anti-human TCR V $\delta$ 2, APC/Cyanine7 anti-human TCR V $\delta$ 2

## Product Data



Human peripheral blood lymphocytes were stained with CD3 PE and TCR V $\delta$ 2 (clone B6) Alexa Fluor® 700 (top) or mouse IgG1,  $\kappa$  Alexa Fluor® 700 isotype control (bottom).

For research use only. Not for diagnostic use. Not for resale. BioLegend will not be held responsible for patent infringement or other violations that may occur with the use of our products.

\*These products may be covered by one or more Limited Use Label Licenses (see the BioLegend Catalog or our website, [www.biolegend.com/ordering#license](http://www.biolegend.com/ordering#license)). BioLegend products may not be transferred to third parties, resold, modified for resale, or used to manufacture commercial products, reverse engineer functionally similar materials, or to provide a service to third parties without written approval of BioLegend. By use of these products you accept the terms and conditions of all applicable Limited Use Label Licenses. Unless otherwise indicated, these products are for research use only and are not intended for human or animal diagnostic, therapeutic or commercial use.

BioLegend Inc., 8999 BioLegend Way, San Diego, CA 92121 [www.biolegend.com](http://www.biolegend.com)  
Toll-Free Phone: 1-877-Bio-Legend (246-5343) Phone: (858) 768-5800 Fax: (877) 455-9587

