

Biotin anti-human TCR Vδ2 Antibody

Catalog# / Size	331404 / 100 µg
Clone	B6
Regulatory Status	RUO
Other Names	T cell receptor V δ 2
Isotype	Mouse IgG1, κ
Description	The Vδ2 TCR is a variant of the TCR δ chain expressed on a subset of γ/δ T cells. Vγ9Vδ2 T lymphocytes, a major γ/δ T cell subset in humans, recognize phosphoantigens, certain tumor cells, and cells treated with aminobisphosphonates. This cell population displays cytolytic activity against various tumor cells. The γ/δ TCR is a heterodimeric TCR complex composed of covalently bound γ and δ chains involved in antigen recognition and the non-covalently associated monomeric proteins CD3δ, γ, ε, and ζ chains.

Product Details

Verified Reactivity	Human
Reported Reactivity	Chimpanzee, Rhesus
Antibody Type	Monoclonal
Host Species	Mouse
Formulation	Phosphate-buffered solution, pH 7.2, containing 0.09% sodium azide.
Preparation	The antibody was purified by affinity chromatography, and conjugated with biotin under optimal conditions.
Concentration	0.5 mg/ml
Storage & Handling	The antibody solution should be stored undiluted between 2°C and 8°C. Do not freeze.
Application	FC - Quality tested
Recommended Usage	Each lot of this antibody is quality control tested by immunofluorescent staining with flow cytometric analysis . For flow cytometric staining, the suggested use of this reagent is ≤0.5 µg per million cells in 100 µl volume. It is recommended that the reagent be titrated for optimal performance for each application.
Application References	<ol style="list-style-type: none">1. Rojas RE, <i>et al.</i> 2005. <i>J. Infect. Dis.</i> 192:1806.2. Correia DV, <i>et al.</i> 2011. <i>Blood</i> 118:992. (FC) PubMed
Product Citations	<ol style="list-style-type: none">1. Ferry GM, <i>et al.</i> 2022. <i>Front Immunol.</i> 13:863155. PubMed2. Keller B, <i>et al.</i> 2016. <i>J Exp Med.</i> 213: 1185 - 1199. PubMed
RRID	AB_1089228 (BioLegend Cat. No. 331404)

Antigen Details

Structure	Ig superfamily member, TCR γ/δ with CD3 forms the CD3/TCR complex
Distribution	Expressed on majority of peripheral γ/δT cells
Function	Antigen recognition, T cell activation
Ligand/Receptor	Peptide bound to MHC

Cell Type	T cells
Biology Area	Adaptive Immunity, Immunology
Molecular Family	TCRs
Antigen References	1. Scotet E, <i>et al.</i> 2005. <i>Immunity</i> 22:71. 2. Rincon-Orozco B, <i>et al.</i> 2005. <i>J. Immunol.</i> 175:2144.
Gene ID	6964

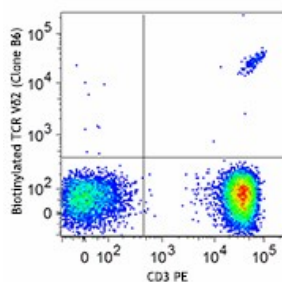
Related Protocols

[Cell Surface Flow Cytometry Staining Protocol](#)

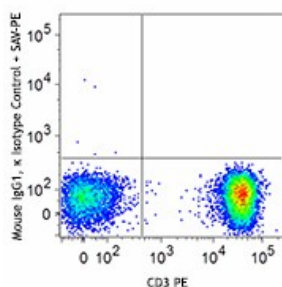
Other Formats

Purified anti-human TCR Vδ2, Biotin anti-human TCR Vδ2, FITC anti-human TCR Vδ2, PE anti-human TCR Vδ2, PerCP anti-human TCR Vδ2, Brilliant Violet 711™ anti-human TCR Vδ2, Pacific Blue™ anti-human TCR Vδ2, Alexa Fluor® 700 anti-human TCR Vδ2, PerCP/Cyanine5.5 anti-human TCR Vδ2, APC anti-human TCR Vδ2, PE/Cyanine7 anti-human TCR Vδ2, APC/Fire™ 750 anti-human TCR Vδ2, Brilliant Violet 421™ anti-human TCR Vδ2, Brilliant Violet 605™ anti-human TCR Vδ2, PE/Dazzle™ 594 anti-human TCR Vδ2, Brilliant Violet 510™ anti-human TCR Vδ2, TotalSeq™-A0582 anti-human TCR Vδ2, TotalSeq™-C0582 anti-human TCR Vδ2, TotalSeq™-B0582 anti-human TCR Vδ2, APC/Cyanine7 anti-human TCR Vδ2

Product Data



Human peripheral blood lymphocytes were stained with CD3 APC and biotinylated TCR Vδ2 (clone B6) (top) or biotinylated mouse IgG1, κ isotype control (bottom), which was then followed by SAV-PE.



For research use only. Not for diagnostic use. Not for resale. BioLegend will not be held responsible for patent infringement or other violations that may occur with the use of our products.

*These products may be covered by one or more Limited Use Label Licenses (see the BioLegend Catalog or our website, www.biolegend.com/ordering#license). BioLegend products may not be transferred to third parties, resold, modified for resale, or used to manufacture commercial products, reverse engineer functionally similar materials, or to provide a service to third parties without written approval of BioLegend. By use of these products you accept the terms and conditions of all applicable Limited Use Label Licenses. Unless otherwise indicated, these products are for research use only and are not intended for human or animal diagnostic, therapeutic or commercial use.

BioLegend Inc., 8999 BioLegend Way, San Diego, CA 92121 www.biolegend.com
Toll-Free Phone: 1-877-Bio-Legend (246-5343) Phone: (858) 768-5800 Fax: (877) 455-9587