

HRP anti- β -Amyloid, 1-40 Antibody (Previously Covance catalog# SIG-39146)

Catalog# / Size	805407 / 200 μ L
Clone	11A50-B10
Regulatory Status	RUO
Other Names	AAA, ABETA, ABPP, AD1, APPI, CTFgamma, CVAP, PN-II, PN2, Amyloid beta A4 protein, preA4, protease nexin-II, peptidase nexin-II, beta-amyloid peptide, alzheimer disease amyloid protein, cerebral vascular amyloid peptide, APP, Amyloid Precursor Protein
Previously	Signet Catalog# 9146-02 Covance Catalog# SIG-39146
Isotype	Mouse IgG1, κ
Description	Amyloid beta ($A\beta$ or Amyloid beta) denotes peptides of 36-43 amino acids in length that are crucially involved in Alzheimer's disease as the main component of the amyloid plaques found in the brains of Alzheimer patients. The peptides result from the amyloid precursor protein (APP), which is cut by certain enzymes to yield $A\beta$. $A\beta$ molecules can aggregate to form oligomers (known as "seeds") which are believed to be able to induce other $A\beta$ molecules to also take the misfolded oligomeric form, leading to a chain reaction akin to a prion infection. The seeds or the resulting amyloid plaques are toxic to nerve cells. The other protein implicated in Alzheimer's disease, tau protein, also forms such prion-like misfolded oligomers, and there is some evidence that misfolded $A\beta$ can induce tau to misfold.

Product Details

Verified Reactivity	Human
Antibody Type	Monoclonal
Host Species	Mouse
Formulation	Aqueous buffered solution containing a carrier protein and preservatives.
Preparation	The antibody was purified by affinity chromatography.
Concentration	0.5 mg/ml
Storage & Handling	Store between 2-8°C. Do not store antibody diluted below 50 μ g/mL in the absence of protein (i.e.: add 2% bovine serum albumin).
Application	IHC-P - Quality tested Dot Blot, ELISA, IP - Reported in the literature, not verified in house
Recommended Usage	Each lot of this antibody is quality control tested by formalin-fixed paraffin-embedded immunohistochemical staining. For immunohistochemistry, a concentration range of 1.0 - 10 μ g/ml is suggested. It is recommended that the reagent be titrated for optimal performance for each application.
Application Notes	Clone 11A50-B10 is reactive to the C-terminus of beta amyloid and is specific for the isoform ending at the 40th amino acid.
Application References	<ol style="list-style-type: none"> 1. Watts JC, <i>et al.</i> 2014. <i>Proc. Natl. Sci. USA</i> 28:10323. (IHC-P) PubMed 2. Diomedea L, <i>et al.</i> 2014. <i>Neurobiol. Dis.</i> 62:521. (Dot Blot) PubMed 3. Watanabe H, <i>et al.</i> 2012. <i>J Neurosci.</i> 15:5085. (ELISA) PubMed 4. Portelius E, <i>et al.</i> 2006. <i>J. Proteome Res.</i> 4:1010. (IP) 5. Vingtdoux V, <i>et al.</i> 2011. <i>FASEB J.</i> 25:219. (ELISA) PubMed 6. Ohmi K, <i>et al.</i> 2011. <i>PLoS One</i> 11:e27461. (IHC-Other) PubMed
Product Citations	<ol style="list-style-type: none"> 1. Casali BT, <i>et al.</i> 2020. <i>Neurobiol Dis.</i> 142:104956. PubMed 2. Casali BT, <i>et al.</i> 2018. <i>J Neuroinflammation.</i> 15:43. PubMed 3. Cheng-Hathaway PJ, <i>et al.</i> 2018. <i>Mol Neurodegener.</i> 13:e0200060. PubMed

RRID

AB_2564979 (BioLegend Cat. No. 805407)

Antigen Details

Biology Area	Cell Biology, Neurodegeneration, Neuroscience, Protein Misfolding and Aggregation
Molecular Family	APP/ β -Amyloid
Gene ID	351

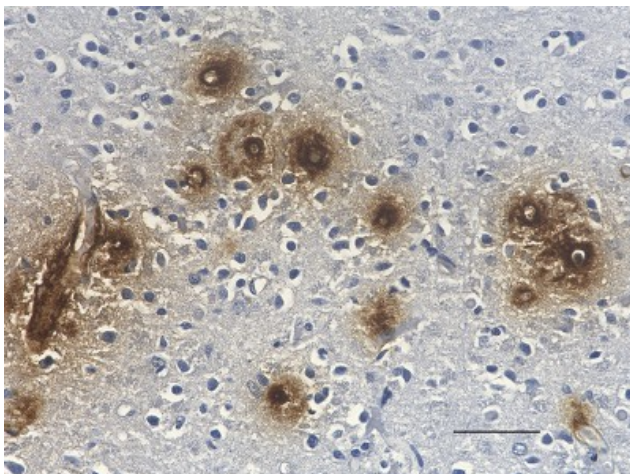
Related Protocols

[Immunohistochemistry Protocol for Paraffin-Embedded Sections](#)

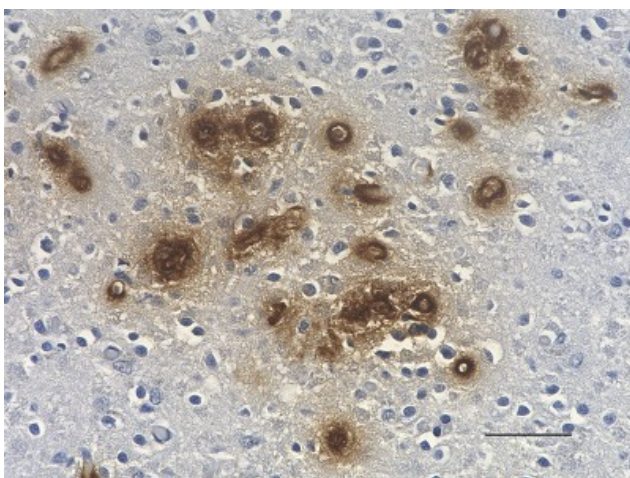
Other Formats

Biotin anti- β -Amyloid, 1-40, HRP anti- β -Amyloid, 1-40, Purified anti- β -Amyloid, 1-40

Product Data



IHC staining of HRP anti- β -Amyloid, 1-40 antibody (clone 11A50-B10) on formalin-fixed paraffin-embedded Alzheimer's disease human brain tissue. Following antigen retrieval using 88% formic acid for 20 minutes at room temperature, the tissue was incubated with 1 μ g/ml of the primary antibody for 60 minutes at room temperature. DAB was used for detection followed by hematoxylin counterstaining, according to the protocol provided. The image was captured with a 40X objective. Scale bar: 50 μ m



IHC staining of HRP anti- β -Amyloid, 1-40 antibody (clone 11A50-B10) on formalin-fixed paraffin-embedded Alzheimer's disease human brain tissue. Following antigen retrieval using 88% formic acid for 20 minutes at room temperature, the tissue was incubated with 1 μ g/ml of the primary antibody for 60 minutes at room temperature. DAB was used for detection followed by hematoxylin counterstaining, according to the protocol provided. The image was captured with a 40X objective. Scale bar: 50 μ m

*These products may be covered by one or more Limited Use Label Licenses (see the BioLegend Catalog or our website, www.biolegend.com/ordering#license). BioLegend products may not be transferred to third parties, resold, modified for resale, or used to manufacture commercial products, reverse engineer functionally similar materials, or to provide a service to third parties without written approval of BioLegend. By use of these products you accept the terms and conditions of all applicable Limited Use Label Licenses. Unless otherwise indicated, these products are for research use only and are not intended for human or animal diagnostic, therapeutic or commercial use.

BioLegend Inc., 8999 BioLegend Way, San Diego, CA 92121 www.biolegend.com
Toll-Free Phone: 1-877-Bio-Legend (246-5343) Phone: (858) 768-5800 Fax: (877) 455-9587