

Pacific Blue™ anti-human CD206 (MMR) Antibody

Catalog# / Size	321151 / 25 tests 321152 / 100 tests
Clone	15-2
Regulatory Status	RUO
Other Names	MMR (macrophage mannose receptor), MR (mannose receptor), CD206, MRC1
Isotype	Mouse IgG1, κ
Description	Macrophage mannose receptor (MMR) is a 162-175 kD type I membrane protein also known as CD206, MRC1, or mannose receptor (MR). It is a pattern recognition receptor (PRR) that belongs to C-type lectin superfamily. MMR is expressed on macrophages, dendritic cells, and hepatic or lymphatic endothelial cells, but not on monocytes. MMR recognizes a range of microbial carbohydrates bearing mannose, fucose, or N-acetyl glucosamine. MMR mediates endocytosis and phagocytosis, induces activation of macrophages and antigen presentation, plays an important role in host defense, and provides a link between innate and adaptive immunity.

Product Details

Verified Reactivity	Human
Antibody Type	Monoclonal
Host Species	Mouse
Immunogen	Purified human mannose receptor
Formulation	Phosphate-buffered solution, pH 7.2, containing 0.09% sodium azide and BSA (origin USA)
Preparation	The antibody was purified by affinity chromatography and conjugated with Pacific Blue™ under optimal conditions.
Concentration	Lot-specific (to obtain lot-specific concentration, please enter the lot number in our Concentration and Expiration Lookup or Certificate of Analysis online tools.)
Storage & Handling	The antibody solution should be stored undiluted between 2°C and 8°C, and protected from prolonged exposure to light. Do not freeze.
Application	FC - Quality tested
Recommended Usage	Each lot of this antibody is quality control tested by immunofluorescent staining with flow cytometric analysis . For flow cytometric staining, the suggested use of this reagent is 5 µL per million cells in 100 µL staining volume or 5 µL per 100 µL of whole blood. It is recommended that the reagent be titrated for optimal performance for each application. * Pacific Blue™ has a maximum emission of 455 nm when it is excited at 405 nm. Prior to using Pacific Blue™ conjugate for flow cytometric analysis, please verify your flow cytometer's capability of exciting and detecting the fluorochrome. Alexa Fluor® and Pacific Blue™ are trademarks of Life Technologies Corporation. View full statement regarding label licenses
Excitation Laser	Violet Laser (405 nm)
Application Notes	The 15-2 antibody blocks the interaction of MMR with its ligand, and inhibits mannose receptor-mediated degradation of t-PA by macrophages. Additional reported applications of this antibody (for the relevant formats) include: Western blotting ¹ , blocking of ligand binding ^{1,2} , immunofluorescence ³ , and immunohistochemical staining of acetone-fixed frozen tissue sections ¹ . The Ultra-LEAF™ purified antibody (Endotoxin < 0.01 EU/µg, Azide-Free, 0.2 µm filtered) is recommended for functional assays (Cat. No. 321149 and 321150).
Application References	

1. Noorman F, *et al.* 1997. *J. Leukocyte Biol.* 61:63. (WB, IHC, Block)
2. Barrett-Bergshoeff M, *et al.* 1997. *Thromb Haemost.* 77:718. (Block)
3. Kato M, *et al.* 2007. *J. Immunol.* 179:6052. (IF)

RRID AB_2860838 (BioLegend Cat. No. 321151)
 AB_2860839 (BioLegend Cat. No. 321152)

Antigen Details

Structure	Type I membrane protein, Pattern Recognition Receptor (PRR) family, C-type lectin superfamily, 162-175 kD
Distribution	Macrophages, dendritic cells, hepatic and lymphatic endothelial cells
Function	Pathogen binding, facilitate phagocytosis and endocytosis, macrophage activation and antigen presentation
Ligand/Receptor	Mannose, fucose, N-acetyl glucosamine
Cell Type	Dendritic cells, Endothelial cells, Macrophages
Biology Area	Cell Biology, Immunology, Neuroscience, Neuroscience Cell Markers
Molecular Family	CD Molecules
Antigen References	<ol style="list-style-type: none"> 1. Mason D, <i>et al.</i> Eds. 2002. <i>Leukocyte Typing VII.</i> Oxford University Press. p303 2. Wileman TE, <i>et al.</i> 1986. <i>P. Natl. Acad. Sci. USA</i> 83:2501. 3. Apostolopoulos V and McKenzie IF. 2001. <i>Curr. Mol. Med.</i> 1:469. 4. Le Cabec V, <i>et al.</i> 2005. <i>J. Leukocyte Biol.</i> 77:934. 5. Barrett-Bergshoeff M, <i>et al.</i> 1997. <i>Thromb. Haemostatis</i> 77:718.
Gene ID	4360

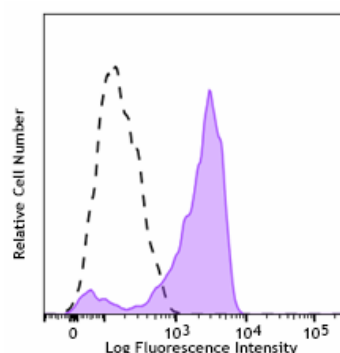
Related Protocols

[Cell Surface Flow Cytometry Staining Protocol](#)

Other Formats

Purified anti-human CD206 (MMR), FITC anti-human CD206 (MMR), PE anti-human CD206 (MMR), PE/Cyanine5 anti-human CD206 (MMR), APC anti-human CD206 (MMR), Alexa Fluor® 488 anti-human CD206 (MMR), Alexa Fluor® 647 anti-human CD206 (MMR), Biotin anti-human CD206 (MMR), APC/Cyanine7 anti-human CD206 (MMR), PerCP/Cyanine5.5 anti-human CD206 (MMR), PE/Cyanine7 anti-human CD206 (MMR), Brilliant Violet 421™ anti-human CD206 (MMR), Purified anti-human CD206 (MMR) (Maxpar® Ready), Alexa Fluor® 700 anti-human CD206 (MMR), PE/Dazzle™ 594 anti-human CD206 (MMR), APC/Fire™ 750 anti-human CD206 (MMR), Brilliant Violet 711™ anti-human CD206 (MMR), Brilliant Violet 510™ anti-human CD206 (MMR), Brilliant Violet 605™ anti-human CD206 (MMR), Brilliant Violet 785™ anti-human CD206 (MMR), TotalSeq™-A0205 anti-human CD206 (MMR), TotalSeq™-B0205 anti-human CD206 (MMR), TotalSeq™-C0205 anti-human CD206 (MMR), Ultra-LEAF™ Purified anti-human CD206 (MMR), Pacific Blue™ anti-human CD206 (MMR), PE/Fire™ 700 anti-human CD206 (MMR), TotalSeq™-D0205 anti-human CD206 (MMR)

Product Data



Human peripheral blood monocytes were stimulated with GM-CSF for 3 days, then stained with CD206 (MMR) (clone 15-2) Pacific Blue™ (filled histogram), or mouse IgG1, κ Pacific Blue™ isotype control (open histogram).

For research use only. Not for diagnostic use. Not for resale. BioLegend will not be held responsible for patent infringement or other violations that may occur with the use of our products.

*These products may be covered by one or more Limited Use Label Licenses (see the BioLegend Catalog or our website, www.biolegend.com/ordering#license). BioLegend products may not be transferred to third parties, resold, modified for resale, or used to manufacture commercial products, reverse engineer functionally similar materials, or to provide a service to third parties without written approval of BioLegend. By use of these products you accept the terms and conditions of all applicable Limited Use Label Licenses. Unless otherwise indicated, these products are for research use only and are not intended for human or animal diagnostic, therapeutic or commercial use.

BioLegend Inc., 8999 BioLegend Way, San Diego, CA 92121 www.biolegend.com
Toll-Free Phone: 1-877-Bio-Legend (246-5343) Phone: (858) 768-5800 Fax: (877) 455-9587