

Pacific Blue™ anti-human CD5 Antibody

Catalog# / Size	364024 / 100 tests
Clone	L17F12
Regulatory Status	RUO
Workshop	II T7
Other Names	Leu-1, Ly-1, T1, Tp67, Leu1
Isotype	Mouse IgG2a, κ
Description	CD5, also known as Leu-1, Ly-1 and T1, is a 67 kD single chain type I glycoprotein that is a member of the scavenger receptor superfamily. CD5 is expressed on T cells, thymocytes, B cell subsets, chronic B lymphocytic leukemia (B-CLL), and peripheral blood dendritic cells. CD5 modulates T and B cell receptor signaling, thymocyte maturation, and T-B cell interactions. One of its ligands is CD72.

Product Details

Verified Reactivity	Human
Antibody Type	Monoclonal
Host Species	Mouse
Immunogen	Human T-acute lymphoblastic leukemia (ALL) cells
Formulation	Phosphate-buffered solution, pH 7.2, containing 0.09% sodium azide and BSA (origin USA)
Preparation	The antibody was purified by affinity chromatography and conjugated with Pacific Blue™ under optimal conditions.
Concentration	Lot-specific (to obtain lot-specific concentration, please enter the lot number in our Concentration and Expiration Lookup or Certificate of Analysis online tools.)
Storage & Handling	The antibody solution should be stored undiluted between 2°C and 8°C, and protected from prolonged exposure to light. Do not freeze.
Application	FC - Quality tested
Recommended Usage	<p>Each lot of this antibody is quality control tested by immunofluorescent staining with flow cytometric analysis. For flow cytometric staining, the suggested use of this reagent is 5 µl per million cells in 100 µl staining volume or 5 µl per 100 µl of whole blood.</p> <p>* Pacific Blue™ has a maximum emission of 455 nm when it is excited at 405 nm. Prior to using Pacific Blue™ conjugate for flow cytometric analysis, please verify your flow cytometer's capability of exciting and detecting the fluorochrome.</p> <p>Alexa Fluor® and Pacific Blue™ are trademarks of Life Technologies Corporation.</p> <p>View full statement regarding label licenses</p>
Excitation Laser	Violet Laser (405 nm)
Application Notes	Additional reported applications (for the relevant formats): immunoprecipitation ^{1,3,4} and immunohistochemical staining of frozen and formalin-fixed paraffin-embedded sections ^{2,3,5} .
Application References	<ol style="list-style-type: none">1. McAlister MS, <i>et al.</i> 1998. <i>Protein Eng.</i> 11:847. (IP)2. Butmarc JR, <i>et al.</i> 1998. <i>Am. J. Clin. Pathol.</i> 109:682. (IHC)3. Engleman EG, <i>et al.</i> 1981. <i>Proc. Natl. Acad. Sci. USA</i> 78:1791. (IHC, IP)4. Ledbetter JA, <i>et al.</i> 1981. <i>J. Exp. Med.</i> 153:310. (FC, IP)5. Warnke R and Levy R. 1980. <i>J. Histochem. Cytochem.</i> 28:771. (IHC)
RRID	AB_2566250 (BioLegend Cat. No. 364024)

Antigen Details

Structure	Scavenger receptor superfamily, 67 kD
Distribution	Thymocytes, T cells, and subsets of B and dendritic cells.
Function	Modulates TCR and BCR signaling, involved in thymocyte maturation and T-B cell interaction
Ligand/Receptor	CD72
Cell Type	B cells, Dendritic cells, T cells, Thymocytes
Biology Area	Costimulatory Molecules, Immunology
Molecular Family	CD Molecules
Antigen References	1. Kipps T. 1989. <i>Adv. Immunol.</i> 47:117. 2. Resnick D, et al. 1994. <i>Trends Biochem. Sci.</i> 1:5. 3. Wood GS and Freudenthal PS. 1992. <i>Am. J. Pathol.</i> 141:789.
Gene ID	921

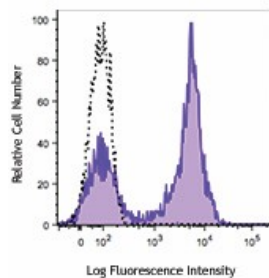
Related Protocols

[Cell Surface Flow Cytometry Staining Protocol](#)

Other Formats

PE/Cyanine7 anti-human CD5, Purified anti-human CD5, Biotin anti-human CD5, PerCP/Cyanine5.5 anti-human CD5, APC/Cyanine7 anti-human CD5, PE/Dazzle™ 594 anti-human CD5, PE anti-human CD5, Brilliant Violet 510™ anti-human CD5, APC anti-human CD5, Brilliant Violet 605™ anti-human CD5, FITC anti-human CD5, Pacific Blue™ anti-human CD5, Alexa Fluor® 700 anti-human CD5, APC/Fire™ 750 anti-human CD5, Brilliant Violet 421™ anti-human CD5, PE/Cyanine5 anti-human CD5

Product Data



Human peripheral blood lymphocytes were stained with CD5 (clone L17F12) Pacific Blue™ (filled histogram) or mouse IgG2a, κ Pacific Blue™ isotype control (open histogram).

For research use only. Not for diagnostic use. Not for resale. BioLegend will not be held responsible for patent infringement or other violations that may occur with the use of our products.

*These products may be covered by one or more Limited Use Label Licenses (see the BioLegend Catalog or our website, www.biolegend.com/ordering#license). BioLegend products may not be transferred to third parties, resold, modified for resale, or used to manufacture commercial products, reverse engineer functionally similar materials, or to provide a service to third parties without written approval of BioLegend. By use of these products you accept the terms and conditions of all applicable Limited Use Label Licenses. Unless otherwise indicated, these products are for research use only and are not intended for human or animal diagnostic, therapeutic or commercial use.

BioLegend Inc., 8999 BioLegend Way, San Diego, CA 92121 www.biolegend.com
Toll-Free Phone: 1-877-Bio-Legend (246-5343) Phone: (858) 768-5800 Fax: (877) 455-9587