

Pacific Blue™ anti-human TCR Vδ2 Antibody

Catalog# / Size	331413 / 25 tests 331414 / 100 tests
Clone	B6
Regulatory Status	RUO
Other Names	T cell receptor V δ 2
Isotype	Mouse IgG1, κ
Description	The Vδ2 TCR is a variant of the TCR δ chain expressed on a subset of γ/δ T cells. Vγ9Vδ2 T lymphocytes, a major γ/δ T cell subset in humans, recognize phosphoantigens, certain tumor cells, and cells treated with aminobisphosphonates. This cell population displays cytolytic activity against various tumor cells. The γ/δ TCR is a heterodimeric TCR complex composed of covalently bound γ and δ chains involved in antigen recognition and the non-covalently associated monomorphic proteins CD3δ, γ, ε, and ζ chains.

Product Details

Verified Reactivity	Human
Reported Reactivity	Chimpanzee, Rhesus
Antibody Type	Monoclonal
Host Species	Mouse
Formulation	Phosphate-buffered solution, pH 7.2, containing 0.09% sodium azide and BSA (origin USA)
Preparation	The antibody was purified by affinity chromatography and conjugated with Pacific Blue™ under optimal conditions.
Concentration	Lot-specific (to obtain lot-specific concentration, please enter the lot number in our Concentration and Expiration Lookup or Certificate of Analysis online tools.)
Storage & Handling	The antibody solution should be stored undiluted between 2°C and 8°C, and protected from prolonged exposure to light. Do not freeze.
Application	FC - Quality tested
Recommended Usage	Each lot of this antibody is quality control tested by immunofluorescent staining with flow cytometric analysis . For flow cytometric staining, the suggested use of this reagent is 5 µl per million cells in 100 µl staining volume or 5 µl per 100 µl of whole blood. * Pacific Blue™ has a maximum emission of 455 nm when it is excited at 405 nm. Prior to using Pacific Blue™ conjugate for flow cytometric analysis, please verify your flow cytometer's capability of exciting and detecting the fluorochrome. Alexa Fluor® and Pacific Blue™ are trademarks of Life Technologies Corporation. View full statement regarding label licenses
Excitation Laser	Violet Laser (405 nm)
Application References	1. Rojas RE, <i>et al.</i> 2005. <i>J. Infect. Dis.</i> 192:1806. 2. Correia DV, <i>et al.</i> 2011. <i>Blood</i> 118:992. (FC) PubMed
RRID	AB_2687082 (BioLegend Cat. No. 331413) AB_2687083 (BioLegend Cat. No. 331414)

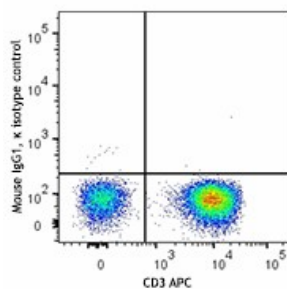
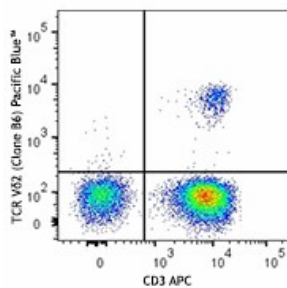
Antigen Details

Structure	Ig superfamily member, TCR γ/δ with CD3 forms the CD3/TCR complex
Distribution	Expressed on majority of peripheral γ/δ T cells
Function	Antigen recognition, T cell activation
Ligand/Receptor	Peptide bound to MHC
Cell Type	T cells
Biology Area	Adaptive Immunity, Immunology
Molecular Family	TCRs
Antigen References	1. Scotet E, <i>et al.</i> 2005. <i>Immunity</i> 22:71. 2. Rincon-Orozco B, <i>et al.</i> 2005. <i>J. Immunol.</i> 175:2144.
Gene ID	6964

Other Formats

Purified anti-human TCR V δ 2, Biotin anti-human TCR V δ 2, FITC anti-human TCR V δ 2, PE anti-human TCR V δ 2, PerCP anti-human TCR V δ 2, Brilliant Violet 711™ anti-human TCR V δ 2, Pacific Blue™ anti-human TCR V δ 2, Alexa Fluor® 700 anti-human TCR V δ 2, PerCP/Cyanine5.5 anti-human TCR V δ 2, APC anti-human TCR V δ 2, PE/Cyanine7 anti-human TCR V δ 2, APC/Fire™ 750 anti-human TCR V δ 2, Brilliant Violet 421™ anti-human TCR V δ 2, Brilliant Violet 605™ anti-human TCR V δ 2, PE/Dazzle™ 594 anti-human TCR V δ 2, Brilliant Violet 510™ anti-human TCR V δ 2, TotalSeq™-A0582 anti-human TCR V δ 2, TotalSeq™-C0582 anti-human TCR V δ 2, TotalSeq™-B0582 anti-human TCR V δ 2, APC/Cyanine7 anti-human TCR V δ 2

Product Data



Human peripheral blood lymphocytes were stained with CD3 APC and TCR V δ 2 (clone B6) Pacific Blue™ (top) or mouse IgG1, κ Pacific Blue™ isotype control (bottom).

For research use only. Not for diagnostic use. Not for resale. BioLegend will not be held responsible for patent infringement or other violations that may occur with the use of our products.

*These products may be covered by one or more Limited Use Label Licenses (see the BioLegend Catalog or our website, www.biolegend.com/ordering#license). BioLegend products may not be transferred to third parties, resold, modified for resale, or used to manufacture commercial products, reverse engineer functionally similar materials, or to provide a service to third parties without written approval of BioLegend. By use of these products you accept the terms and conditions of all applicable Limited Use Label Licenses. Unless otherwise indicated, these products are for research use only and are not intended for human or animal diagnostic, therapeutic or commercial use.

BioLegend Inc., 8999 BioLegend Way, San Diego, CA 92121 www.biolegend.com
Toll-Free Phone: 1-877-Bio-Legend (246-5343) Phone: (858) 768-5800 Fax: (877) 455-9587