

## PE anti-mouse I-A<sup>k</sup> (Aβ<sup>k</sup>) Antibody

<b>Catalog# / Size</b>	109908 / 200 µg
<b>Clone</b>	10-3.6
<b>Regulatory Status</b>	RUO
<b>Other Names</b>	MHC class II
<b>Isotype</b>	Mouse (CWB) IgG2a, κ
<b>Description</b>	The 10-3.6 antibody reacts with the β chain of the I-A <sup>k</sup> MHC class II alloantigen. This class II molecule is expressed on antigen presenting cells (including B cells) and a subset of T cells from H-2 <sup>k</sup> bearing mice and involved in antigen presentation to T cells expressing CD3/TCR and CD4 proteins. The 10-3.6 antibody cross-reacts with I-A <sup>f,r,s</sup> antigens and I-A <sup>g7</sup> of NOD mice; it does not react with other haplotypes (e.g., b, d, p, q).

### Product Details

---

<b>Verified Reactivity</b>	Mouse
<b>Antibody Type</b>	Monoclonal
<b>Host Species</b>	Mouse
<b>Immunogen</b>	C3H mouse splenocytes
<b>Formulation</b>	Phosphate-buffered solution, pH 7.2, containing 0.09% sodium azide.
<b>Preparation</b>	The antibody was purified by affinity chromatography, and conjugated with PE under optimal conditions.
<b>Concentration</b>	0.2 mg/ml
<b>Storage &amp; Handling</b>	The antibody solution should be stored undiluted between 2°C and 8°C, and protected from prolonged exposure to light. <b>Do not freeze.</b>
<b>Application</b>	<a href="#">FC - Quality tested</a>
<b>Recommended Usage</b>	Each lot of this antibody is quality control tested by <a href="#">immunofluorescent staining with flow cytometric analysis</a> . For flow cytometric staining, the suggested use of this reagent is ≤0.06 µg per million cells in 100 µl volume. It is recommended that the reagent be titrated for optimal performance for each application.
<b>Excitation Laser</b>	Blue Laser (488 nm) Green Laser (532 nm)/Yellow-Green Laser (561 nm)
<b>Application Notes</b>	Additional reported applications (for the relevant formats) include immunoprecipitation <sup>1,2</sup> , protection against autoimmune IDDM <sup>3</sup> , <i>in vitro</i> blocking of antigen-specific MHC-restricted responses and <i>in vivo</i> inhibition of lymphoma growth <sup>4</sup> , and immunohistochemical staining <sup>5</sup> of acetone-fixed frozen sections.  This clone does not cross react with other haplotypes (e.g. b, d, p, q).

### Application References

- Landais D, *et al.* 1986. *J. Immunol.* 137:3002. (IP)
- Kupinski JM, *et al.* 1983. *J. Immunol.* 130:2277. (IP)
- Kappler JW, *et al.* 1981. *J. Exp. Med.* 153:1198.
- Alisauskas RM, *et al.* 1986. *Immunopharmacology* 12:1.
- Reis e Sousa and Germain 1999. *J. Immunol.* 162:6652. (IHC)
- Yui MA, *et al.* 2010. *J. Immunol.* 185:284. [PubMed](#)
- Gaudreau S, *et al.* 2007. *J. Immunol.* 179:3638. (FC)
- Busman-Sahay K, *et al.* 2011. *J. Immunol.* 186:6710. [PubMed](#).

### Product Citations

- Menzel L, *et al.* 2021. *Cell Rep.* 37:109878. [PubMed](#)
- Wu J, *et al.* 2021. *Mol Med Rep.* 23:. [PubMed](#)

- Mulas F, *et al.* 2020. Cell Mol Immunol. . [PubMed](#)
- Wang H, *et al.* 2020. Nat Mater. 1.65555556. [PubMed](#)
- Stephens WZ, *et al.* 2021. Cell Rep. 37:109916. [PubMed](#)

RRID AB\_313457 (BioLegend Cat. No. 109908)

## Antigen Details

---

<b>Structure</b>	$\beta$ chain of MHC class II
<b>Distribution</b>	B cell and activated T cells, APCs of H-2 <sup>b</sup> mice
<b>Function</b>	Antigen presentation
<b>Ligand/Receptor</b>	CD3/TCR, CD4
<b>Cell Type</b>	Antigen-presenting cells, B cells, T cells, Tregs
<b>Biology Area</b>	Immunology, Innate Immunity
<b>Molecular Family</b>	MHC Antigens
<b>Antigen References</b>	1. Watts C. 1997. <i>Ann. Rev. Immunol.</i> 15:821. 2. Pamer E, <i>et al.</i> 1998. <i>Ann. Rev. Immunol.</i> 16:323.
<b>Gene ID</b>	<a href="#">14960</a>

## Related Protocols

---

[Cell Surface Flow Cytometry Staining Protocol](#)

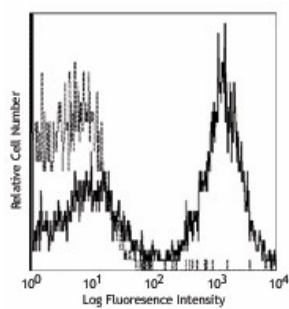
## Other Formats

---

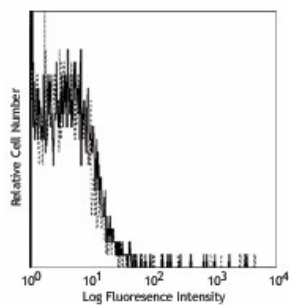
FITC anti-mouse I-A<sup>k</sup> (A $\beta^k$ ), PE anti-mouse I-A<sup>k</sup> (A $\beta^k$ ), Purified anti-mouse I-A<sup>k</sup> (A $\beta^k$ )

## Product Data

---



C3H/He mouse splenocytes stained with 10-3.6 PE



BALB/c mouse splenocytes stained with 10-3.6 biotin and detected with Sav-PE

For research use only. Not for diagnostic use. Not for resale. BioLegend will not be held responsible for patent infringement or other violations that may occur with the use of our products.

\*These products may be covered by one or more Limited Use Label Licenses (see the BioLegend Catalog or our website, [www.biolegend.com/ordering#license](http://www.biolegend.com/ordering#license)). BioLegend products may not be transferred to third parties, resold, modified for resale, or used to manufacture commercial products, reverse engineer functionally similar materials, or to provide a service to third parties without written approval of BioLegend. By use of these products you accept the terms and conditions of all applicable Limited Use Label Licenses. Unless otherwise indicated, these products are for research use only and are not intended for human or animal diagnostic, therapeutic or commercial use.

BioLegend Inc., 8999 BioLegend Way, San Diego, CA 92121 [www.biolegend.com](http://www.biolegend.com)  
Toll-Free Phone: 1-877-Bio-Legend (246-5343) Phone: (858) 768-5800 Fax: (877) 455-9587